

## Quick Start Guide for the SQL Dashboard and the end-to-end SQL monitoring functions

*This guide helps you getting started with a typical installation for the SQL Dashboard and the end-to-end SQL monitoring (Extended Insight) feature of IBM Tivoli OMEGAMON XE for DB2 Performance Expert on z/OS, Version 5.3.0, abbreviated to OMEGAMON XE for DB2 PE. This SQL monitoring feature uses the infrastructure of IBM InfoSphere Optim Performance Manager.*

### Product overview

OMEGAMON<sup>®</sup> XE for DB2<sup>®</sup> PE is a tool for performance analysis, monitoring, and tuning for the DB2 database in the z/OS<sup>®</sup> environment. It also provides a SQL Dashboard and an end-to-end SQL monitoring feature. With these SQL monitoring features, database administrators (DBAs) can extend monitoring to the entire database application system including client, server, and network.

After you have installed and configured OMEGAMON XE for DB2 PE, you can install IBM<sup>®</sup> InfoSphere<sup>®</sup> Optim<sup>™</sup> Performance Manager.

### 1 Step 1: Access your software



To access your software, go to Shopz at the following website. Shopz is IBM's productivity tool for planning and ordering zSeries software.

<https://www14.software.ibm.com/webapp/ShopzSeries/ShopzSeries.jsp>

### 2 Step 2: Enable the SQL Dashboard and end-to-end SQL monitoring on the host server



Make sure that OMEGAMON XE for DB2 PE is installed and configured as described in the:  
IBM Tivoli OMEGAMON XE for DB2 Performance Expert on z/OS Knowledge Center

After the SMP/E installation and configuration is complete, run the Configuration Tool to enable the SQL Dashboard and the end-to-end SQL monitoring support as described in:

Enabling Performance Expert Client support, SQL Dashboard, end-to-end SQL or stored procedure monitoring support

### 3 Step 3: Evaluate your hardware and system configuration



For more information, see *Installation requirements for IBM InfoSphere Optim Performance Manager and components* at the following website:

[http://www-01.ibm.com/support/knowledgecenter/SS9PE5\\_5.3.1/com.ibm.datatools.perfmgmt.installconfig.doc/pm\\_install\\_reqs.html](http://www-01.ibm.com/support/knowledgecenter/SS9PE5_5.3.1/com.ibm.datatools.perfmgmt.installconfig.doc/pm_install_reqs.html)

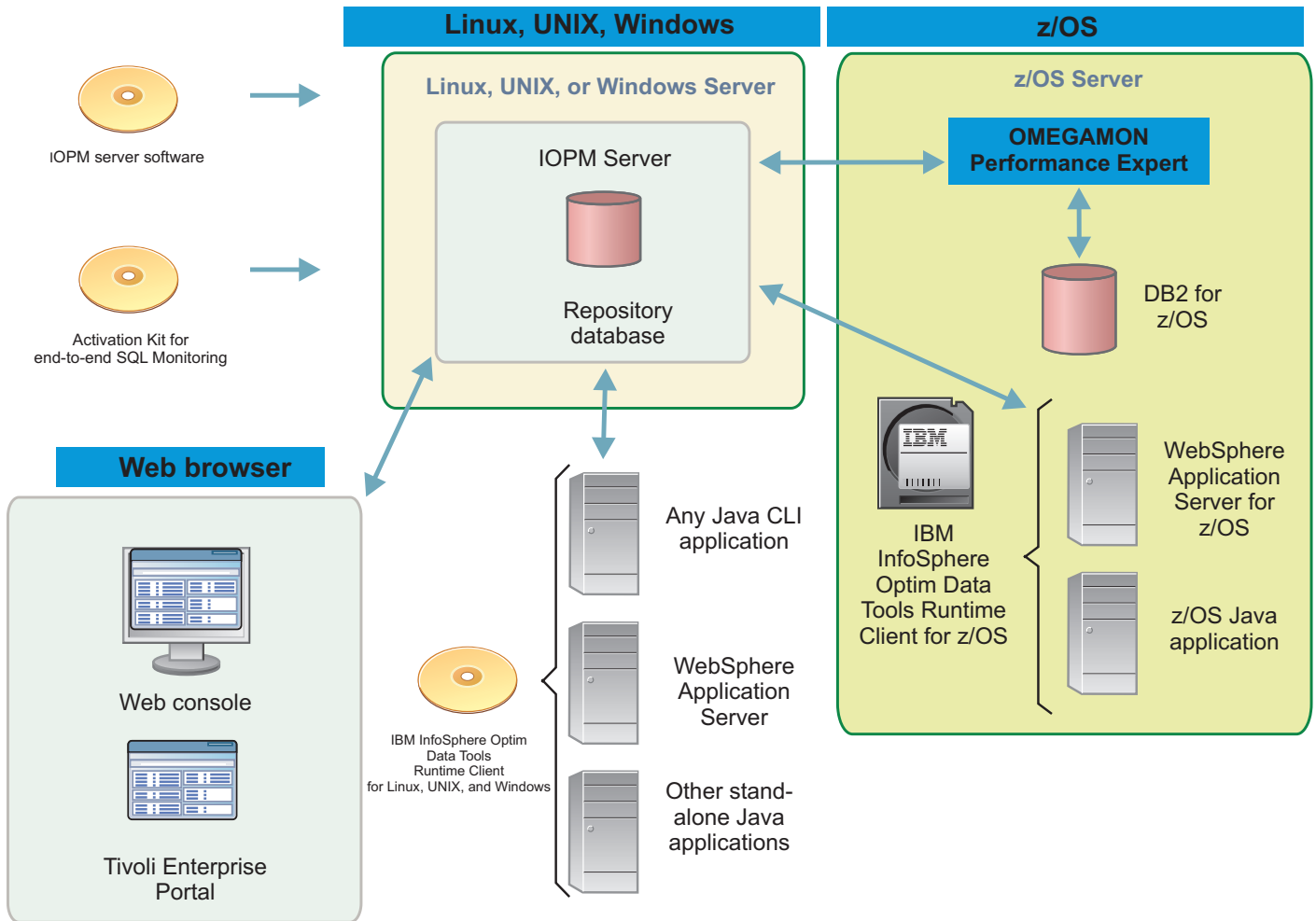
## 4 Step 4: Review the base architecture



The software package for OMEGAMON XE for DB2 PE includes the following items:

- IBM InfoSphere Optim Performance Manager including IBM DB2 Enterprise Server Edition (ESE) 10.5 and the DB2 ESE 10.5 Restricted Use Activation software
- A restricted-use copy of DB2 for Linux, UNIX, and Windows to be used as data repository by IBM InfoSphere Optim Performance Manager
- The License activation kit for the end-to-end SQL monitoring function for z/OS (required for both the SQL Dashboard and the end-to-end feature)
- The IBM InfoSphere Optim Data Tools Runtime Client for Linux, UNIX, and Windows (required for the end-to-end SQL monitoring only)
- The IBM InfoSphere Optim Data Tools Runtime Client for z/OS (required for the end-to-end SQL monitoring only)

The following diagram illustrates the architecture of the product and provides a basis for planning your installation:



## 5 Step 5: Specifying a DB2 instance



Before you can install IBM InfoSphere Optim Performance Manager on your system, DB2 ESE must be installed so it can be used by IBM InfoSphere Optim Performance Manager as repository database.

During the installation of IBM InfoSphere Optim Performance Manager, you can specify an existing DB2 instance of DB2 ESE to be used by IBM InfoSphere Optim Performance Manager, or you can create a new one.

- If you specify an existing DB2 instance, ensure that it is running before you start the installation of IBM InfoSphere Optim Performance Manager.
- If you install a new DB2 instance:
  1. Activate the DB2 instance after the installation of DB2 ESE 10.5 is completed by using the DB2 ESE 10.5 Restricted Use Activation software.  
DB2 ESE 10.5 and the DB2 ESE 10.5 Restricted Use Activation software are included in the software package of IBM InfoSphere Optim Performance Manager.
  2. Open the DB2 ESE 10.5 License Center and install the license.

## 6 Step 6: Install IBM InfoSphere Optim Performance Manager



Make sure that an instance of a supported edition of DB2 for Linux, UNIX, and Windows is available before you install IBM InfoSphere Optim Performance Manager for your selected operating system. For more information, see *Installing InfoSphere Optim Performance Manager by using the installation wizard or the console mode* at the following website:

[http://www-01.ibm.com/support/knowledgecenter/SS9PE5\\_5.3.1/com.ibm.datatools.perfmgmt.installconfig.doc/pm\\_install\\_wizard\\_or\\_console.html](http://www-01.ibm.com/support/knowledgecenter/SS9PE5_5.3.1/com.ibm.datatools.perfmgmt.installconfig.doc/pm_install_wizard_or_console.html)

The installation process creates a repository database in the DB2 server instance that can be used by InfoSphere Optim Performance Manager.

## 7 Step 7: Activate the SQL Dashboard and the end-to-end SQL monitoring function for z/OS on IBM InfoSphere Optim Performance Manager



Run the License Activation Kit for z/OS for your operating system on the same computer where IBM InfoSphere Optim Performance Manager is installed. After the Activation Kit for z/OS is activated, InfoSphere Optim Performance Manager is restarted.

For more information, see *Activating end-to-end SQL monitoring for Tivoli OMEGAMON XE for DB2 Performance Expert on z/OS* at the following website:

[http://www-01.ibm.com/support/knowledgecenter/SS9PE5\\_5.3.1/com.ibm.datatools.perfmgmt.installconfig.doc/activating\\_sql\\_monitoring\\_zos.html](http://www-01.ibm.com/support/knowledgecenter/SS9PE5_5.3.1/com.ibm.datatools.perfmgmt.installconfig.doc/activating_sql_monitoring_zos.html)

## 8 Step 8: Configure your host database to use SQL Dashboard and end-to-end SQL monitoring



Open the web console and log on to the IBM InfoSphere Optim Performance Manager to add and configure a database for monitoring.

For more information, see *Configuring InfoSphere Optim Performance Manager* at the following website:

[http://www-01.ibm.com/support/knowledgecenter/SS9PE5\\_5.3.1/com.ibm.datatools.perfmgmt.installconfig.doc/pm\\_configuring.html](http://www-01.ibm.com/support/knowledgecenter/SS9PE5_5.3.1/com.ibm.datatools.perfmgmt.installconfig.doc/pm_configuring.html)

## 9 Step 9: Install and configure the IBM InfoSphere Optim Data Tools Runtime Client for Linux, UNIX, and Windows (optional, required for end-to-end SQL monitoring only)



On the database application computer where the database client drivers are installed, run the installation tool to install the IBM InfoSphere Optim Data Tools Runtime Client for Linux, UNIX, and Windows.

If the configuration tool is not started from the installation tool, you can open the configuration tool in the following directory:

- On Windows: install\_directory\IBM\_Data\_Tools\configuration\cfgtool.bat
- On Linux or UNIX: install\_directory\IBM\_Data\_Tools\configuration\cfgtool.sh

## 10 Step 10: Install and configure the IBM InfoSphere Optim Data Tools Runtime Client for z/OS (optional, required for end-to-end SQL monitoring only)



Install IBM InfoSphere Optim Data Tools Runtime Client for z/OS by following the instructions in the Program Directory for OMEGAMON XE for DB2 Performance Expert, refer to the IBM Tivoli OMEGAMON XE for DB2 Performance Expert on z/OS Knowledge Center .

After you have installed IBM InfoSphere Optim Data Tools Runtime Client for z/OS, you must manually configure JDBC and WebSphere® applications for end-to-end SQL monitoring. For more information, see *Manually configuring JDBC and WebSphere applications for extended insight monitoring* at the following website:

[http://www-01.ibm.com/support/knowledgecenter/SS9PE5\\_5.3.1/com.ibm.datatools.perfmgmt.ei.installconfig.doc/ei\\_configure\\_jdbc.html](http://www-01.ibm.com/support/knowledgecenter/SS9PE5_5.3.1/com.ibm.datatools.perfmgmt.ei.installconfig.doc/ei_configure_jdbc.html)

## 11 Step 11: Optional: Integrate IBM InfoSphere Optim Performance Manager into Tivoli monitoring



If you have previously installed and configured Tivoli® Enterprise Portal, you can integrate InfoSphere Optim Performance Manager with IBM Tivoli Composite Application Manager (ITCAM) for Application Diagnostics and ITCAM for Transactions in a Tivoli Enterprise Portal (TEP) Console for end-to-end transaction monitoring. When the integration is complete, you can do end-to-end monitoring from your TEP console.

For more information about the Tivoli integration, see *Tivoli integration roadmap* at the following website:

[http://www-01.ibm.com/support/knowledgecenter/SS9PE5\\_5.3.1/com.ibm.datatools.perfmgmt.installconfig.doc/roadmap\\_opm\\_tep.html](http://www-01.ibm.com/support/knowledgecenter/SS9PE5_5.3.1/com.ibm.datatools.perfmgmt.installconfig.doc/roadmap_opm_tep.html)

## More information



For more information, see the following websites:

- IBM Tivoli OMEGAMON XE for DB2 Performance Expert on z/OS at:  
[http://www-01.ibm.com/support/knowledgecenter/OMXEDB2PE530/com.ibm.omegamon.xe.pe\\_db2.doc\\_5.3.0/ko2welcome\\_pe.htm?cp=SSUSPS%2F0](http://www-01.ibm.com/support/knowledgecenter/OMXEDB2PE530/com.ibm.omegamon.xe.pe_db2.doc_5.3.0/ko2welcome_pe.htm?cp=SSUSPS%2F0)
- Integrated Data Management Support at:  
<http://www.ibm.com/software/data/optim/support/>

